

High impact cleaner MeshClean

Series 5T2/5T3



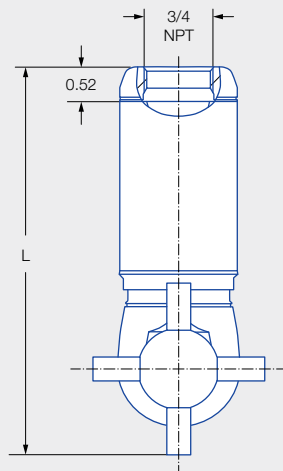
Features:

- High degree of effectiveness due to particularly powerful solid stream nozzles
- Suitable for smaller tanks with stubborn dirt
- Active self-cleaning due to engineered nozzle design
- Low maintenance

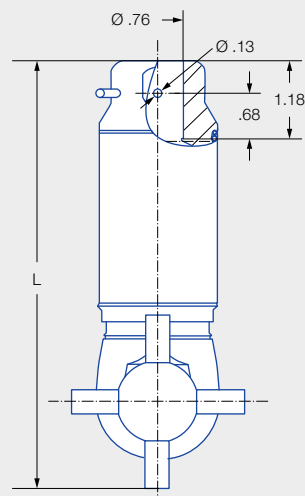


**ATEX version
available on request**

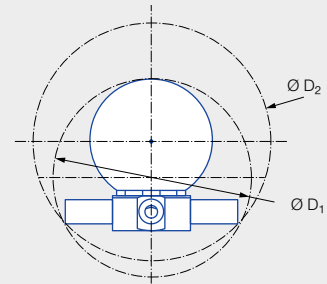
Series 5T2/5T3



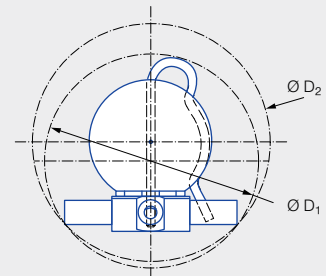
Female thread



Dimensions of the
slip-on connection according
to ASME-BE (OD-tube)



Insertion diameter D_1 and
interference circle diameter D_2
of the threaded connection



Insertion diameter D_1 and
interference circle diameter D_2
of the slip-on connection





	Max. Tank diameter [ft]	0	15	30	45	60
---	--------------------------------	---	----	----	----	----

Technical data:



Maximum operating temperature
302 °F
302 °F (ATEX)



Maximum ambient temperature
302 °F
302 °F (ATEX)



Installation
Operation in every installation position



Bearing
Ball bearing



Material
Stainless steel 1.4404
(316L), PTFE, PEEK, EPDM



Weight
2.2 lbs



Surface quality
Ra ≤ 0.8 µm
OUTSIDE



Surface quality
Ra ≤ 1.6 µm
INSIDE



Steam suitability
Suitable



Insertion diameter
2.68–3.23 in



Recommended filter
Line strainer with a mesh size of 0.2 mm/80 mesh



Recommended operating pressure
75 psi



Adapter
3/4 BSPP is compatible with HygienicFit



Rotation monitoring
Sensor-compatible, information: see pages 96–97




Maintainable

Function video
www.lechler.com/de-en/medialibrary/videos-general-industry
Or scan the QR code.



Type	Dimensions [in]					
	Female thread			Slip-on connection		
	L	Ø D ₁	Ø D ₂	L	Ø D ₁	Ø D ₂
5T2.849.1Y	5.59	2.68	3.23	6.18	3.03	3.23
5T2.969.1Y	5.59	2.68	3.23	6.18	3.03	3.23
5T3.029.1Y	5.59	2.68	3.23	6.18	3.03	3.23
5T3.089.1Y	5.83	2.91	3.58	6.42	3.23	3.58

Spray angle	Ordering number			Narrowest free cross section Ø (in)	Number Ø Nozzles (mm)	V̇ water [gal/min]								Max. tank diameter [ft]
	Type	Connection				p [psi] (p _{max} = 218 psi)								
		3/4" Female NPT	3/4"-Slip-on											
						30	40	60	75	5 bar	Liters per min.	100	200	
360° 	5T2.849.1Y	BL	TF07	.067	4 x 1.75	3.40	3.92	4.80	5.37	20	6.20	8.77	0.7	37
	5T2.969.1Y	BL	TF07	.106	4 x 2.70	6.80	7.85	9.61	10.75	40	12.41	17.55	1.4	39
	5T3.029.1Y	BL	TF07	.126	4 x 3.20	9.35	9.34	10.79	14.78	55	17.06	24.13	1.9	41
	5T3.089.1Y	BL	TF07	.157	4 x 4.00	13.42	15.50	18.98	21.22	79	24.50	34.66	2.8	42

BSPP connection available on request.

The maximum tank diameter applies to the recommended operating pressure and is meant as a recommendation only. The cleaning result is also affected by the type of soiling.

Information about slip-on connections

- Pin made of stainless steel 316L supplied (Ordering no.: 095.022.1Y.50.60.E).
- Depending on the diameter of the adapter, the flow rate can increase due to a leakage between the adapter and the rotating cleaning nozzle.