

Extendable rotating cleaning nozzle

PopUp Whirly

Series 5P2/5P3



Features:

- Pressure-dependent automatically extending rotating cleaning nozzle
- Can be installed flush in the tank wall
- Suitable for cleaning pipes and applications that use foam
- Particularly suitable for applications in the pharmaceutical, chemical and food and beverage industry



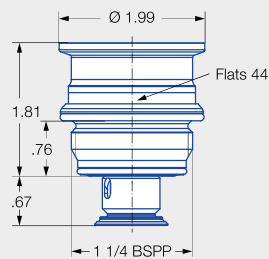
**ATEX version
available on request**



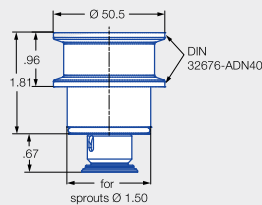
FDA



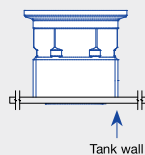
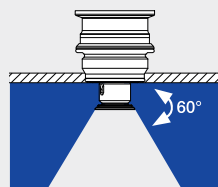
Series 5P2



Male thread



Tri-Clamp connection¹



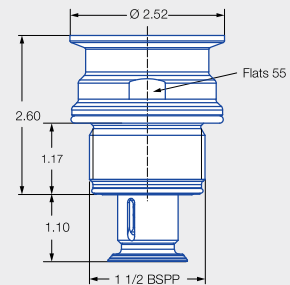
Via thread in idle position



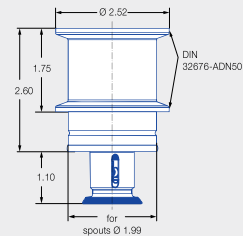
FDA



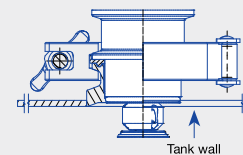
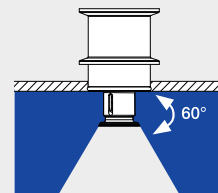
Series 5P3



Male thread



Tri-Clamp connection²



Via Tri-Clamp in operating position

Installation situation

Note Tri-Clamp Version:

Gasket with a thickness of .08 in. must be used with weld-in-flange.

Not sold with nozzle.

5P2 requires standard

DIN32676-A / DN40

5P3 requires standard

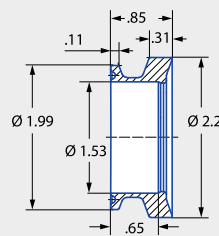
DIN32676-A / DN50

¹ A clamp according to DIN 32676-A with a connection diameter of 1.99 in is required to connect the nozzle to the weld-in flange.

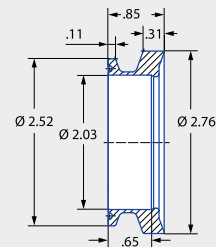
² A clamp according to DIN 32676-A with a connection diameter of 2.52 in is required to connect the nozzle to the weld-in flange.



Weld-in Flange for Tri-Clamp



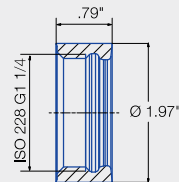
Ordering no.: 050.020.1Y.01.00
Material: Stainless steel 316L



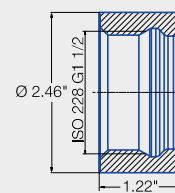
Ordering no.: 050.020.1Y.01.01
Material: Stainless steel 316L

Weld-in socket for Threaded Version

The thread is hygienically sealed with 2 O-rings included in the scope of delivery



Ordering no.: 050.020.1Y.AQ.00
Material: Stainless steel 316L



Ordering no.: 050.020.1Y.AS.00
Material: Stainless steel 316L

Max. tank diameter [ft]	0	5	10	15	20	25	30
-------------------------	---	---	----	----	----	----	----

Technical data:



Maximum operating temperature
284 °F
284 °F (ATEX)



Maximum ambient temperature
302 °F
284 °F (ATEX)



Installation
Operation in every installation position



Bearing
Slide bearing



Material
Stainless steel 1.4404 (316L), stainless steel 1.4571 (316Ti), stainless steel 1.4401 (316), FKM



Weight
1.32 lbs



Surface quality
Ra ≤ 0,8 µm on process side, remaining housing Ra ≤ 1,6 µm



Surface quality
Ra ≤ 1,6 µm



Steam suitability
Not suitable




Insertion diameter
.79–2.52 in



Recommended filter
Line strainer with mesh size of 0.3 mm/50 mesh



Recommended operating pressure
30 psi
5P2: Opening pressure approx 14.5 psi and closing pressure approx 7.25 psi
5P3: Opening pressure approx 13.05 psi and closing pressure approx 7.25 psi

Spray angle	Ordering number				Narrowest free cross section Ø [in]	V̇ water [gal/min]							Max. tank diameter [ft]
	Type	Connection				p [psi] (p _{max} = 75 psi)							
		1 1/4" Male BSPP	1 1/2" Male BSPP	Tri-Clamp									
						15	20	30	Liters per min. 2 bar	40	60	75	
<div>60°</div> <div></div>	5P2.873.1Y	AP			0.10	2.85	3.29	4.03	15	4.65	5.70	6.37	2
	5P2.873.1Y			00	0.10	2.85	3.29	4.03	15	4.65	5.70	6.37	2
	5P2.923.1Y	AP			0.14	3.80	4.38	5.37	20	6.20	7.60	8.49	3
	5P2.923.1Y			00	0.14	3.80	4.38	5.37	20	6.20	7.60	8.49	3
	5P3.043.1Y		AR		0.13	7.60	8.77	10.75	40	12.41	15.19	16.99	7
	5P3.043.1Y			00	0.13	7.60	8.77	10.75	40	12.41	15.19	16.99	7

The maximum tank diameter applies to the recommended operating pressure and is meant as a recommendation only.
The cleaning result is also affected by the type of soiling.

Information on operation

- The PopUp Whirly is not suitable for operation with compressed air or any other gas.
- Operation above the recommended operating pressure has a negative impact on the cleaning result and wear.