

Rotating cleaning nozzle NanoSpinner2 Series 5M1



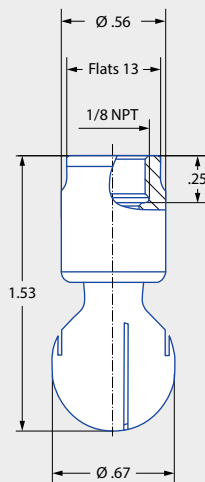
Features:

- Compact design for confined spaces
- Hygienic design
- Suitable for high temperatures
- Made entirely of stainless steel

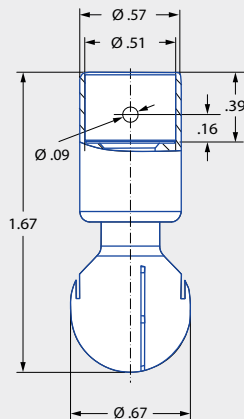


**ATEX version
available on request**

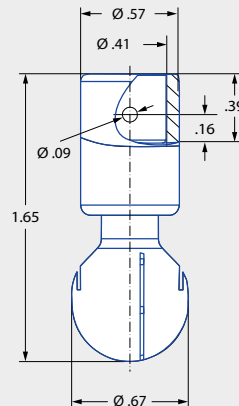
Series 5M1



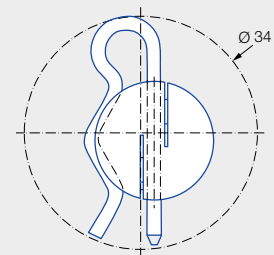
Female thread



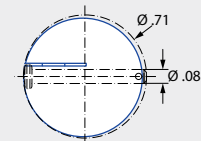
Dimensions of slip-on
connection according to
ASME-BPE (OD tube)



Dimensions of slip-on
connection according to
DIN 11866 series B



Insertion diameter
of slip-on connection
1.4404 (316L)



Insertion diameter
of slip-on connection
2.4602 (Alloy 22)

Max. tank diameter [ft]	0	1	2	3	4	5	6	7	8	9
-------------------------	---	---	---	---	---	---	---	---	---	---

Technical data:



Maximum operating temperature
392 °F
203 °F (ATEX)



Maximum ambient temperature
482 °F
392 °F (ATEX)



Installation
Operation in every
installation position



Bearing
Double ball bearing made of
stainless steel 1.4404
(316L) or 2.4602 (Alloy 22)



Material
Stainless steel 1.4404
(316L) or 2.4602
(Alloy 22)



Weight
.04 lbs



Surface quality
Ra ≤ 0,4 µm



Surface quality
Ra ≤ 0,8 µm



Steam suitability
Not suitable



Insertion diameter
.67-1.34 in



Recommended filter
Line strainer with a mesh
size of 0.1 mm/170 mesh




Recommended operating pressure
30 psi

Function video
www.lechler.com/de-en/medialibrary
Or scan the QR Code.





Spray angle	Ordering number				Narrowest free cross section Ø [in]	V̇ water [gal/min]							Max. tank diameter [ft]
	Type 1/8" Female NPT	Connection				p [psi] (p _{max} = 100 psi)							
		1/8 NPT	Ø .4 inches in accordance with DIN 11866 Series B	1/2" slip-on connection				Liters per min.					
						20	30	2 bar	40	60	80	100	
360° 	5M1.879.1Y	BB	TF04	TF05 ¹	0.016	3.29	4.03	15	4.65	5.70	6.60	7.36	4
	5M1.929.1Y	BB	TF04	TF05 ¹	0.020	4.40	5.37	20	6.20	7.60	8.77	9.81	5

¹ The connection variant TF05 is not available as an ATEX variant.

BSPP thread available on request.

The maximum tank diameter applies to the recommended operating pressure and is meant as a recommendation only.
The cleaning result is also affected by the type of soiling.

Compressed air should be used for dry blowing for a short time only. Operation above the recommended operating pressure has a negative impact on the cleaning result and wear.

Information on slip-on connection

Cotter pin made of stainless steel 1.4404 (316L) included (Order no. 05M.130.1Y.00.00). For version made of 2.4602 (Alloy 22), bolt with head incl. cotter pin included (Order no. 05M.131.21.00.00).

Depending on the adapter diameter, the flow rate may increase due to the leakage between the adapter and rotating cleaning nozzle.