

Rotating cleaning nozzle MicroWhirly Series 566



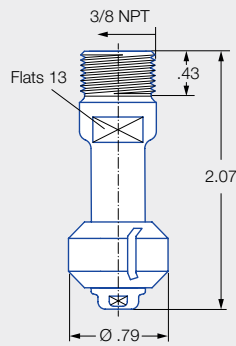
Features:

- Cleaning with effective flat jets
- Robust slide bearing made of PEEK
- Equipped with a thread or slip-on connection
- Food grade compatibility

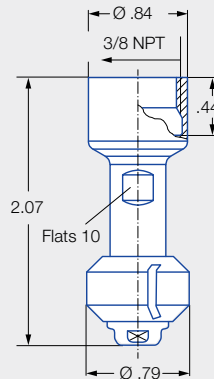


**ATEX version
available on request**

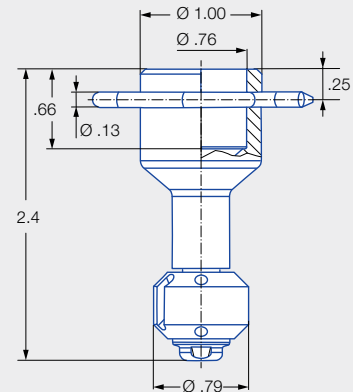
Series 566



Male thread



Female thread



Dimension of the
slip-on connection according to
ASME-BPE (OD tube)

Max. tank diameter [ft]	0	5	10	15	20	25	30
-------------------------	---	---	----	----	----	----	----

Technical data:



Maximum operating temperature
302 °F
194 °F (ATEX)



Maximum ambient temperature
392 °F
248 °F (ATEX)



Installation
Operation in every installation position



Bearing
Slide bearing made of PEEK



Material
Stainless steel 1.4404 (316L), PEEK ESD (only ATEX version)



Weight
Threaded = 0.1 lbs
Slip-on = 0.2 lbs



Surface quality
Ra ≤ 1.6 µm



Surface quality
Ra ≤ 1.6 µm



Steam suitability
Suitable



Insertion diameter
.79–1.89 in



Recommended filter
Line strainer with a mesh size of 0.3 mm/50 mesh

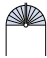

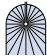


Recommended operating pressure
30 psi

Function video
www.lechler.com/microwhirly
Or scan the QR code.





Spray angle	Ordering number				Narrowest free cross section Ø [in]	V̇ water [gal/min]						Max. tank diameter [ft]
	Type	Connection				p [psi] (p _{max} = 90 psi)						
		3/8" NPT Male	3/8" NPT Female	3/4"- Slip-on					Liters per min.			
						20	30	2 bar	40	60	80	
<div>180°</div> <div></div>	566.873.1Y	BE	BF	TF07	0.04	3.29	4.03	15	4.65	5.70	6.58	5
	566.933.1Y	BE	BF	TF07	0.09	4.60	5.64	21	6.51	798	9.21	5.5
<div>180°</div> <div></div>	566.874.1Y	BE	BF	TF07	0.04	3.29	4.03	15	4.65	5.70	6.58	5
	566.934.1Y	BE	BF	TF07	0.09	4.60	5.64	21	6.51	798	9.21	5.5
<div>360°</div> <div></div>	566.879.1Y	BE	BF	TF07	0.04	3.29	4.03	15	4.65	5.70	6.58	5
	566.939.1Y	BE	BF	TF07	0.09	4.60	5.64	21	6.51	798	9.21	5.5

BSPP and weld-on version available upon request.

The maximum tank diameter applies to the recommended operating pressure and is meant as a recommendation only.
The cleaning result is also affected by the type of soiling.

Compressed air should be used for dry blowing for a short time only. Operation above the recommended operating pressure has a negative impact on the cleaning result and wear.

Information about slip-on connections

- Stainless steel 316L pin supplied.
- Depending on the diameter of the adapter, the flow rate can increase due to a leakage between the adapter and the rotating cleaning nozzle.

Ordering	Type	+	Code	=	Ordering no.
example:	566.873.1Y	+	BE	=	566.873.1Y.BE